



# STAMPME SILLY.COM

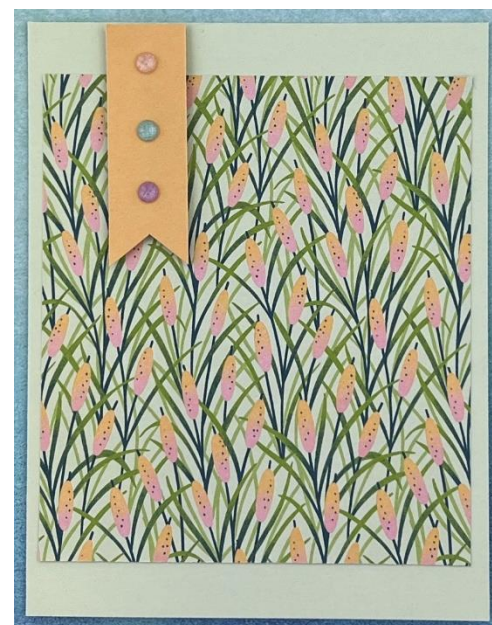
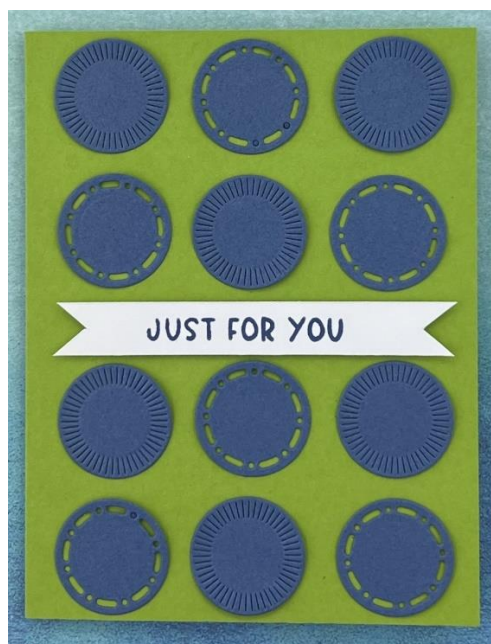
INDEPENDENT STAMPIN' UP! DEMONSTRATOR

EMAIL: [JANDUFOUR@YAHOO.COM](mailto:JANDUFOUR@YAHOO.COM)

ONLINE STORE: [HTTPS://JANDUFOUR.STAMPINUP.NET](https://JANDUFOUR.STAMPINUP.NET)

MY BLOG POSTS: [HTTPS://STAMPMESILLY.COM](https://STAMPMESILLY.COM)

## CARD MAPS 18, 19, AND 20! WE'RE ALMOST DONE!



### CUTTING INSTRUCTIONS CARD 18:

- USING DSP, CUT 3 STRIPS 1-1/2 X 3-3/4 IN LANDSCAPE WITH ONE STRIP 1/2 X 4 FOR FLAG. THIS CAN BE PART OF THE DSP OR A SEPARATE COLOR. CUT 2 INCH CIRCLE FOR SENTIMENT.

### CUTTING INSTRUCTIONS CARD 19:

- CUT MISTY MOONLIGHT CIRCLES FROM SPOTLIGHT ON NATURE DIES (TOTAL 12, 1 INCH BIG) USE GRANNY APPLE GREEN FOR CARD BASE. ALTERNATE IS CALYPSO CORAL AND CRUSHED CURRY.

### CUTTING INSTRUCTIONS CARD 20:

- A2 BASE SOFT SEA FOAM WITH LILLY POND DSP CUT AT 4 X 4-1/2 IN PORTRAIT MODE. FLAG IS 2-1/4 FLAT ON TOP. 2024-2026 IN COLOR SHIMMER GEMS

SUPPLIES AND VIDEO ARE HERE: [HTTPS://WP.ME/P9QOKA-14](https://wp.me/p9QOKA-14)