



STAMPME SILLY.COM

INDEPENDENT STAMPIN' UP! DEMONSTRATOR

EMAIL: JANDUFOUR@YAHOO.COM

ONLINE STORE: [HTTPS://JANDUFOUR.STAMPINUP.NET](https://JANDUFOUR.STAMPINUP.NET)

MY BLOG POSTS: [HTTPS://STAMPMESILLY.COM](https://STAMPMESILLY.COM)

ST. PADDY'S DAY WITH HEARTS



CUTTING INSTRUCTIONS FOR CARD:

- CUT BASIC WHITE THICK 10 x 7 SCORE AT 5 ALONG 10 INCH SIDE
- CUT SHY SHAMROCK 4-1/2 x 6-1/2 CUT DSP 4-3/4 x 6-3/4
- CUT 3 HEARTS OUT OF GLIMMER PAPER. CUT DIAMOND DIE OUT OF GLITTER SHIMMER. CUT STEM BY HAND
- CUT DIE FOR SENTIMENT OH HAPPY DAY. LAYER ONTO GLIMMER PAPER WITH DIMENSIONALS

CUTTING INSTRUCTIONS FOR ENVELOPE:

- FOR 8-1/2 x 11 PAPER: SCORE ALONG 8-1/2 SIDE AT 1/2 INCH, ROTATE 180 AND SCORE AT 3/4 INCH
- ON 11 SIDE SCORE AT 2-7/8, ROTATE AND SCORE AGAIN AT 7/8 FOLD AND BURNISH; SEE DIAGRAM
- FOR DSP CUT 11 x 10 LANDSCAPE. SCORE ALONG 10 INCH SIDE SCORE AT 1 INCH ROTATE AND SCORE AT 8-1/4. ALONG 11 INCH SIDE SCORE AT 2-7/8, ROTATE 180 AND SCORE AGAIN AT 2-7/8.
- FOLD AND BURNISH. SEE DIAGRAM

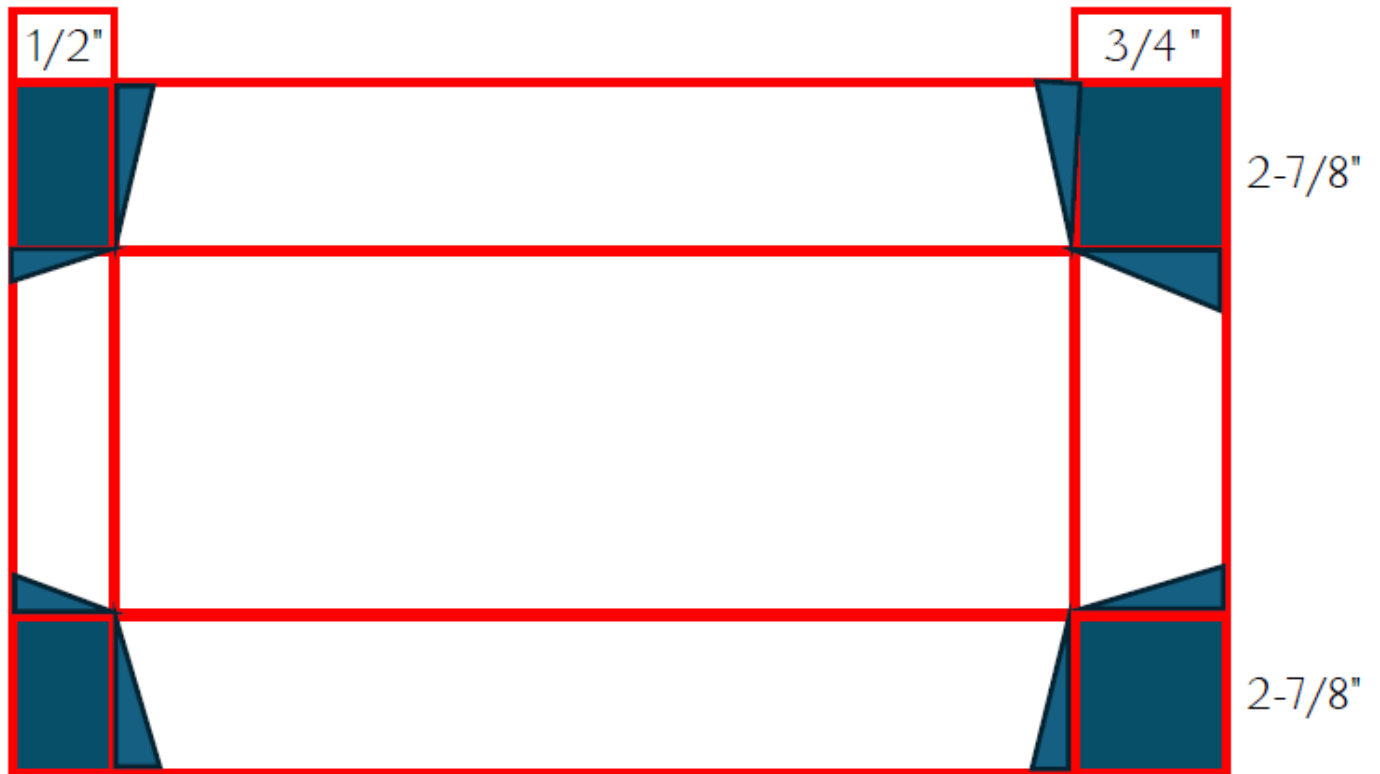
ASSEMBLY:

- LAYER TWO LAYERS ONTO CARD BASE THAT IS 5 x 7
- ADD 3 HEARTS INTO SHAMROCK AND LAYER SENTIMENT ONTO DIAMOND OF GLITTER PAPER
- ADD 2024-226 RESIN DOTS IS DESIRED.

CHECK POST FOR FEBRUARY 26, 2025 AT THIS QR CODE: [HTTPS://STAMPMESILLY.COM](https://STAMPMESILLY.COM)



8-1/2 x 11 inch paper



Cut out these navy areas

Directions for cutting away the DSP 10 x 11 are the same as above using correct scoring measurements